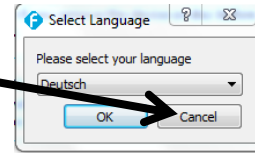


Transferring Videos off of the Flip Camera

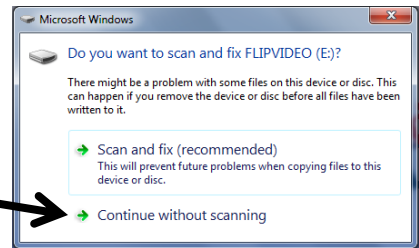
1. Insert Flip camera into a USB port of the computer .



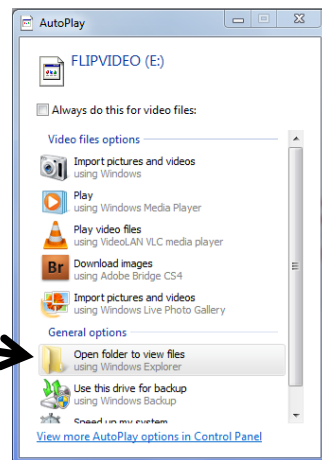
2. If the Select Language window appears → click **Cancel**



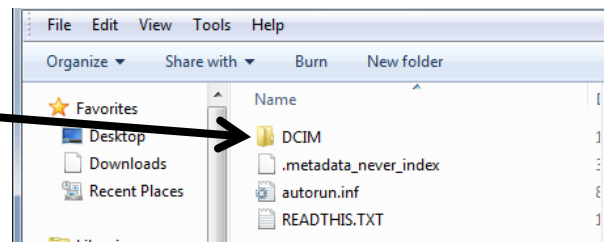
3. If the scan and fix window appears → click **Continue without scanning**



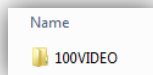
4. In the Autoplay window, click **Open folder to view files**



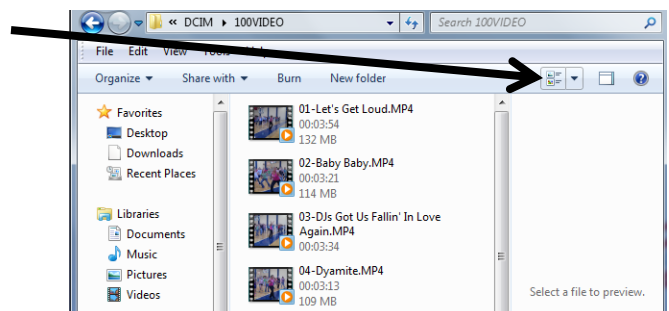
5. Double click the folder **DCIM**



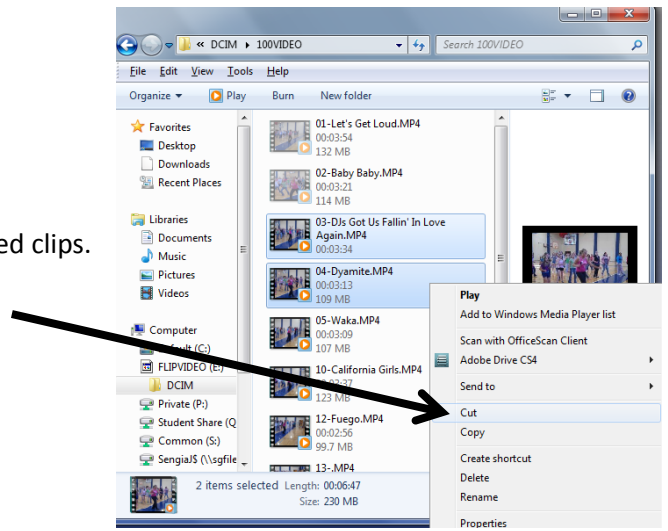
6. Double click the folder **100VIDEO**



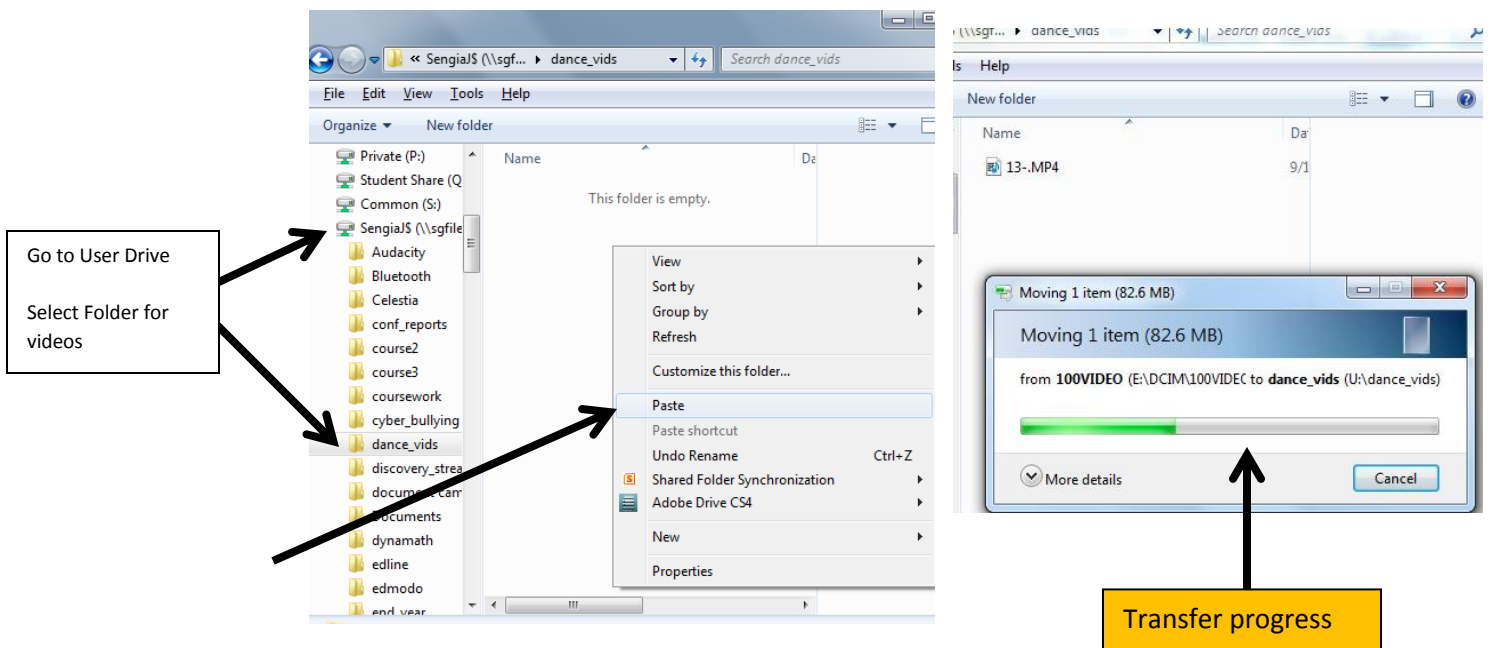
7. Click on the change view button, select tiles to see thumbnails of the clips



8. Select the clips you want to transfer by holding the Control key (CTRL) and single clicking each file
9. After selecting the clips, right click on one of the selected clips. Select **Cut** . (do not use Copy !)



10. Go to your user drive. Select a folder you want your videos in . Double click the folder to open it.
11. *Right click* in the folder window and paste. This may take a while to complete, depending on the number of clips and the length of the clips.



12. Once the transfer is complete, remove the Flip camera from the computer. Delete any remaining videos on the camera by pressing the delete button on the camera. (looks like a trash can)