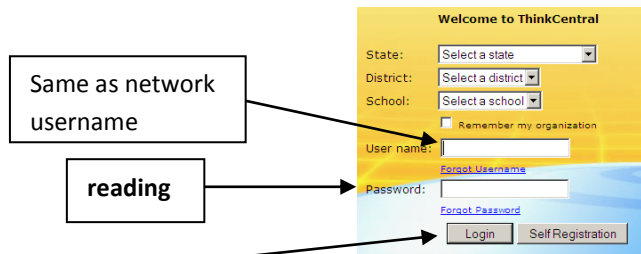


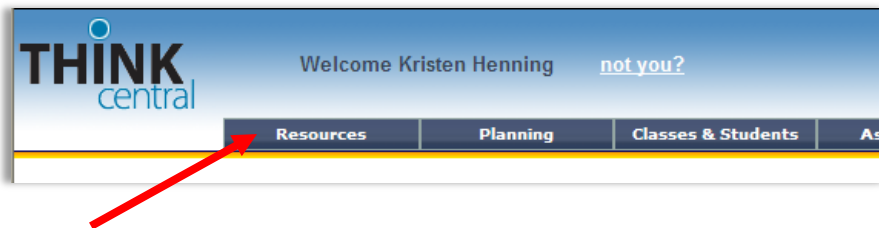
Accessing Online Resources

1. Open Internet Explorer and go to www-k6.thinkcentral.com
2. Select state, district, school building.
3. Username – enter in the same username you use to log into the network
Password - **reading**






The screenshot shows the 'Welcome to ThinkCentral' login page. It includes dropdown menus for 'State', 'District', and 'School', a 'Remember my organization' checkbox, and input fields for 'User name' and 'Password'. A 'Login' button is at the bottom. Annotations include a box labeled 'Same as network username' with an arrow pointing to the 'User name' field, and a box labeled 'reading' with an arrow pointing to the 'Password' field. A third arrow points from the 'Login' button to step 4 of the instructions.

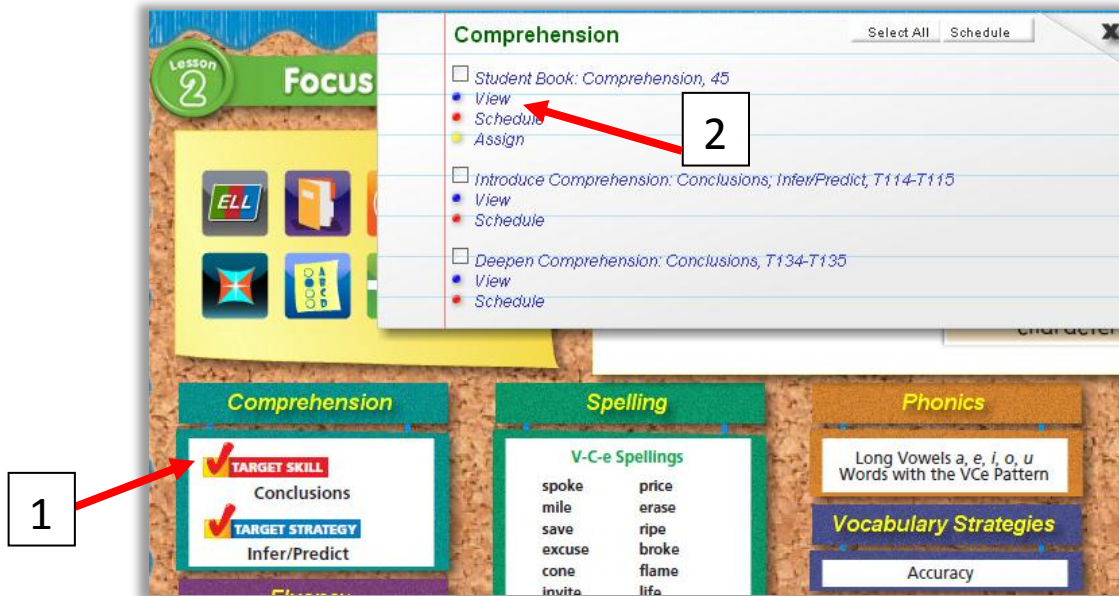
4. Click **Login**
5. Once logged in to ThinkCentral, click on the Resources tab to access your grade level specific resources.



6. Below you will find some common icons that are used to denote specific resources throughout the ThinkCentral site: *Note: Your grade level may not have access to all of these resources.

 <p>Journeys Focus Wall L3</p>	 <p>Journeys Teacher Edition L3</p>	 <p>Journeys Comprehensive Language and Literacy Guide, L3</p>
---	--	---

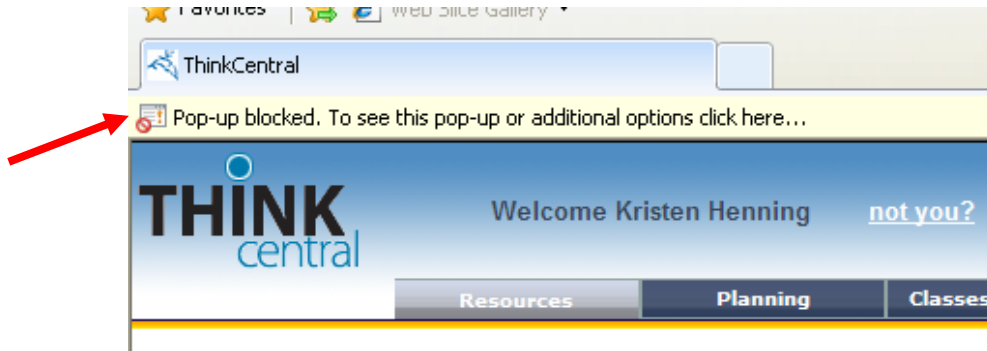
- Click on the content or material you are teaching or planning for to view available resources.



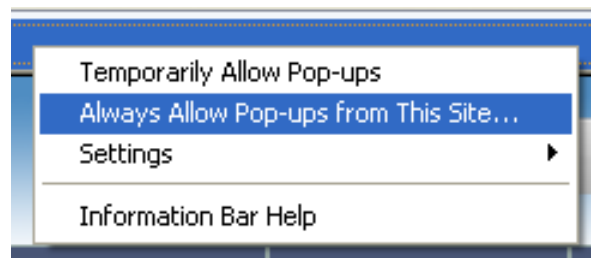
- To access Comprehension skill resources, Click on the Comprehension box
- A pop-up will appear showing the available resources
- Click on “View” under the resource you would like to open

*****You may have a blocked page here – follow these directions to minimize this in the future*****

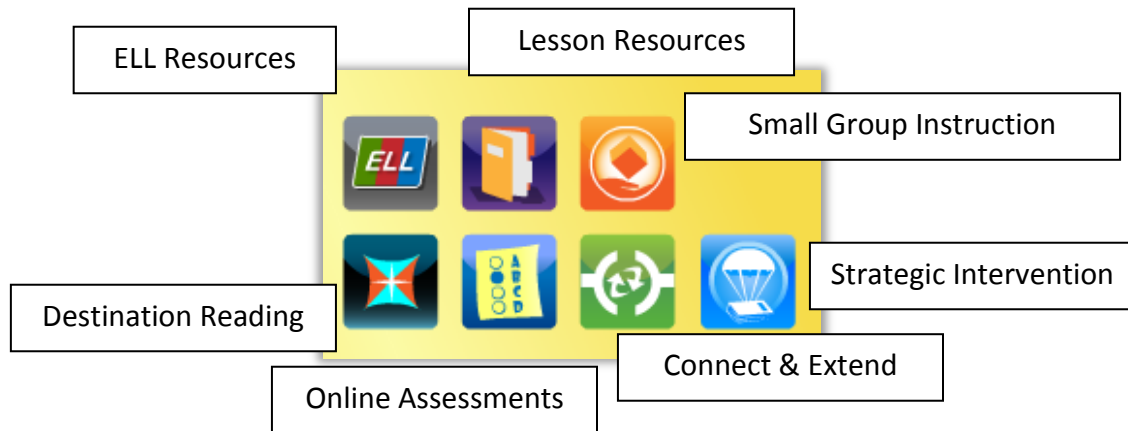
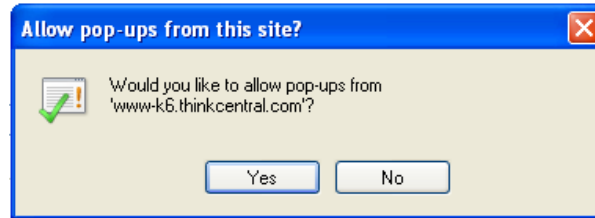
- When the pop up is blocked, you will see a yellow information bar at the top of your window.



- Click on it and choose “Always allow pop-ups from this site”



- You will be asked to verify that you want to allow pop-ups from this site – Click Yes!



- The lesson resources button takes you to the Home Letter, Projectables, Vocab Word Cards, and Weekly To-Do Lists for each lesson.
- Small Group Instruction holds all of your leveled readers and resources for multiple levels.
- The Destination Reading link takes you to a list of the main skills from the lesson which are presented within Destination Reading. This is a great link for whole class instruction.
- Online Assessments will be discussed at future meetings.
- Connect & Extend provides resources for students to connect to other stories, their own independent reading, or extend what they have learned.
- Strategic Intervention provides mini lesson activities directly related to skills taught through the week.